

GODREJ NEST

SECTOR 150, NOIDA

GODREJ NEST has been registered with Uttar Pradesh RERA Authority in two phases. Godrej Nest Phase -1 UPRERAPRJ13521 and Godrej Nest Phase-2 UPRERAPRJ14252; website- <http://up-rera.in>
The two towers situated in Godrej Nest Phase-2 are being marketed as “Solitaire” and have been approved as Tower B1 and B2 in the sanctioned building plan dated 30.09.2016 bearing No. IV-1490/929

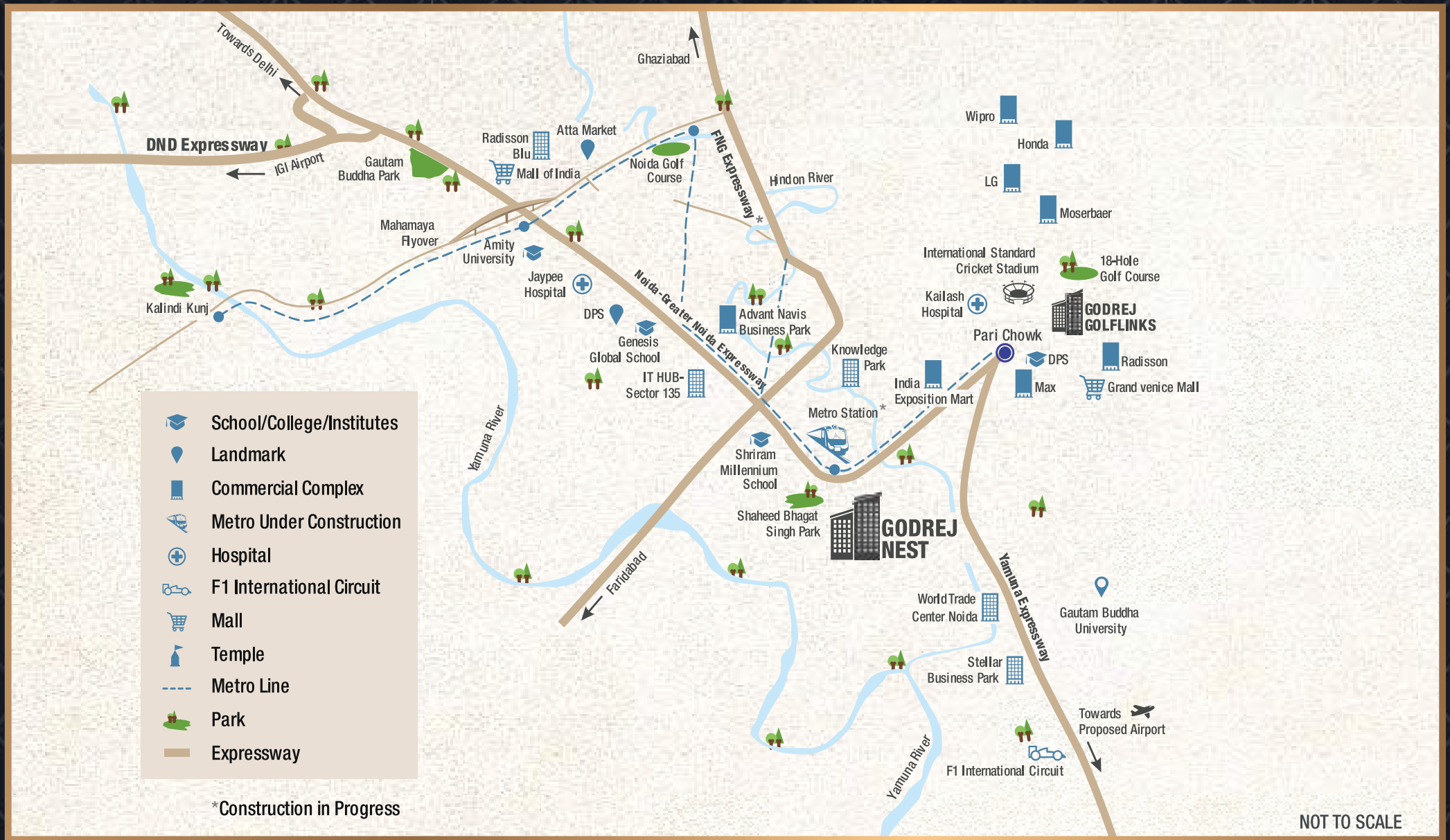


INTRODUCING 24X7



PRIVILEGED LIVING

LOCATION MAP



NOT TO SCALE

CONNECTIVITY



SEAMLESS CONNECTIVITY
FROM PROPOSED
INTERNATIONAL AIRPORT



UPCOMING METRO
CONNECTIVITY TO
CONNAUGHT PLACE,
IGI AIRPORT, NDLS
AND GURGAON



SIGNAL FREE CONNECTIVITY
TO DELHI VIA NOIDA -
GR. NOIDA E-WAY

NEARBY SOCIAL INFRASTRUCTURE



SCHOOLS

- Lotus Valley International School, Sector 126, Noida
- DPS, Sector 132, Noida
- Somerville International School, Sector 132, Noida
- Shriram Millennium School, Sector 135, Noida
- Genesis Global School, Sector 132, Noida



HEALTHCARE

- Fortis Hospital, Sector 62, Noida
- Max Hospital, Gr. Noida
- Kailash Hospital, Knowledge park, Gr. Noida
- Jaypee Hospital, Sector 128, Noida



COMMERCIAL

- Accenture, Sector 135, Noida
- KPMG, Sector 142, Noida
- Samsung, Sector 142, Noida
- TCS, Sector 153, Noida
- Oxygen Business Park, Sector 144, Noida



COLLEGES & TECHNICAL INSTITUTES

- Amity University, Sector 125, Noida
- Galgotia University, Knowledge Park, Gr. Noida
- Sharda University, Knowledge Park, Gr. Noida

PART OF MEGA SPORTS CITY



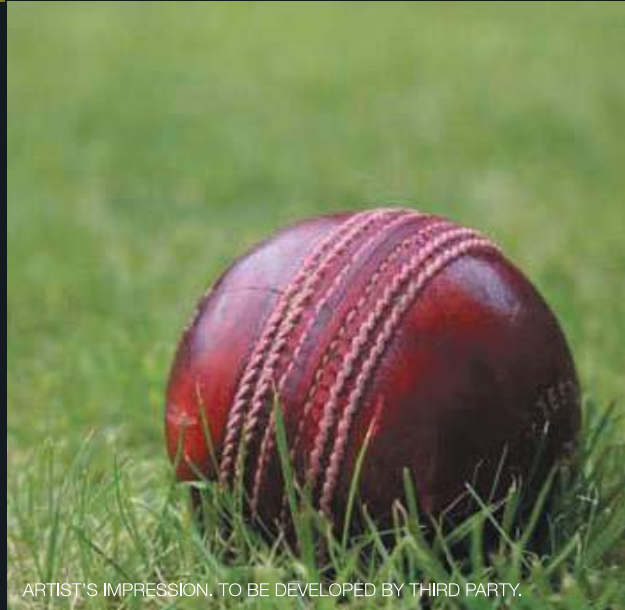
ARTIST'S IMPRESSION. TO BE DEVELOPED BY THIRD PARTY.

INTERNATIONAL STANDARD
CRICKET ACADEMY*



ARTIST'S IMPRESSION. TO BE DEVELOPED BY THIRD PARTY.

9 HOLE GOLF COURSE*
&
GOLF CLUB*



ARTIST'S IMPRESSION. TO BE DEVELOPED BY THIRD PARTY.

EXPANSIVE RETAIL*
&
ENTERTAINMENT CENTRE*



* FACILITIES PROVIDED AS PART OF APPROVED MASTER PLAN FOR SPORTS CITY SC-02.
DO NOT FORM A PART OF GODREJ NEST

MASTER LAYOUT PLAN



LEGENDS

1. Entry Plaza
2. Tower Drop Off
3. Driveway
4. Parking
- 5A. Tower Drop Off Plaza
- 5B. Iconic Tower Drop Off Plaza
- 5C. Building Lobby
- 5D. Arcade
- 5E. Art Gallery
6. Private Greens
7. Pathway/ Jogging Trail
8. Alcove Of Solace
9. Pavilions of Reciprocity
10. Textured Garden
11. Herbs Garden
12. Reflexology Garden
13. Contemplation Pavilion
14. Aromatic Garden
15. Tree Mall
16. Ferns Garden
17. Walk Of Tranquility
18. Amphitheatre
19. Central Lawn
20. Digital Alcove
- 21A. Tree Bosque
- 21B. Yoga/ Meditation Lawn
22. Cloud Park
23. Swimming Pool
24. Pool Deck
25. Relaxation Pool
26. Lili Pond
27. Surprise Fountain
28. Kids Pool
29. Infinity Edge
30. Kids Play Area
31. Party Lawn
32. Zen Garden
33. Lawn Of Expression
34. Walk Of Infinity
- 35A. Board Game With Changeable Flooring
- 35B. Maze Garden
36. Infinity Plaza
37. Fitness Alcove
38. Skating Strip
39. Retention Pond
40. Half Basketball Court
41. Tennis Court
42. Cricket Pitch
43. Commercial Plaza



24X7 CONVENIENCES



**ASPIRED BY MANY
ENJOYED BY YOU**



SPORTS & GAMES

24x7 GYM



NOT A SITE PHOTOGRAPH. ARTIST'S IMPRESSION

24x7 SPORTING ARENAS

TENNIS / CRICKET PITCH / BASKETBALL / CHANGEABLE FLOORING BOARD GAMES / SKATING STRIP



NOT A SITE PHOTOGRAPH. ARTIST'S IMPRESSION

24x7 SWIMMING POOL

KIDS POOL, RELAXATION POOL



NOT A SITE PHOTOGRAPH. ARTIST'S IMPRESSION

24x7 INDOOR GAMES



NOT A SITE PHOTOGRAPH. ARTIST'S IMPRESSION



WORK & LEISURE

24x7 CAFÉ



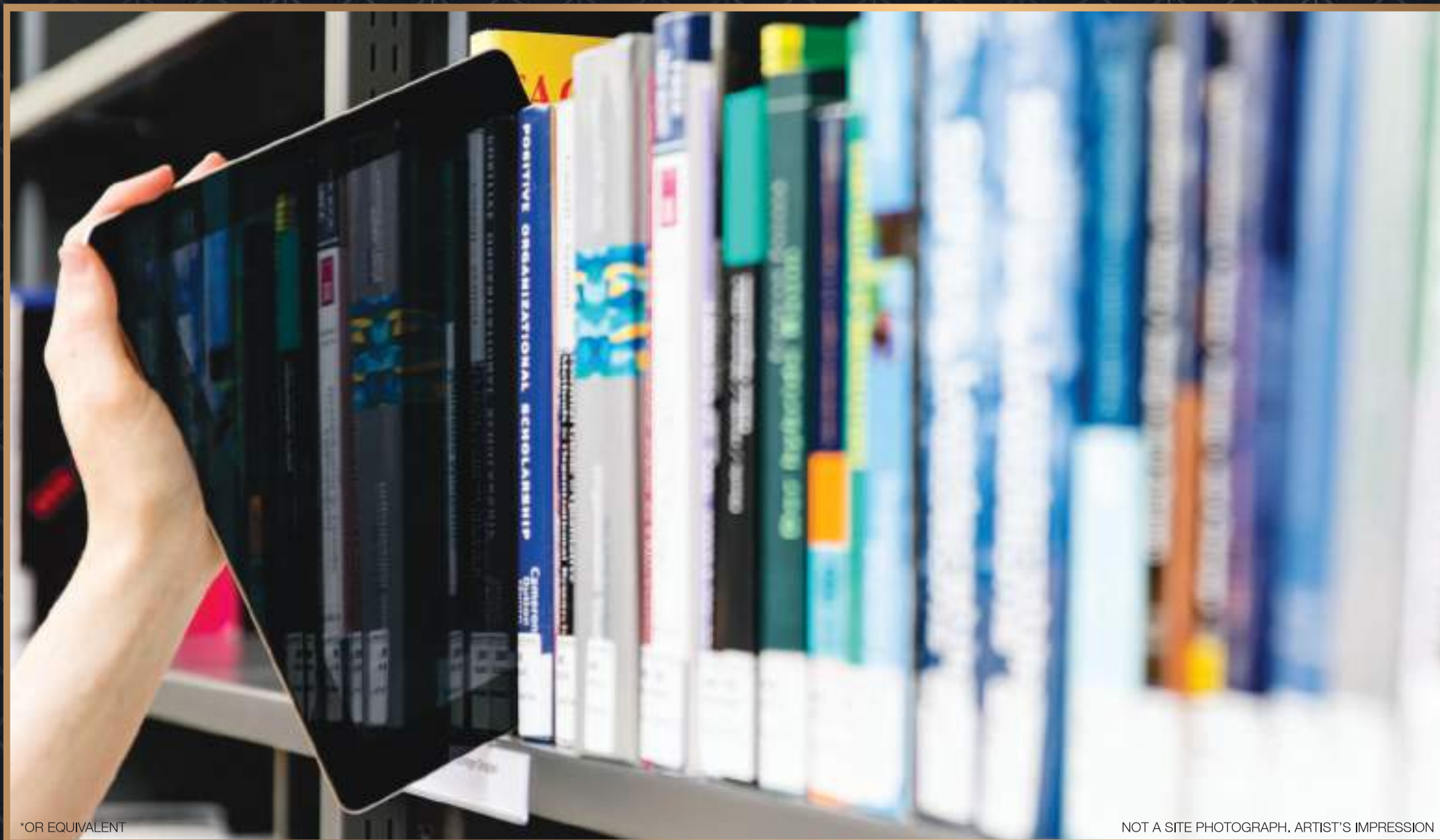
NOT A SITE PHOTOGRAPH. ARTIST'S IMPRESSION

24x7 PARTY LOUNGE



NOT A SITE PHOTOGRAPH. ARTIST'S IMPRESSION

E-LIBRARY BY I LOVE READ*



*OR EQUIVALENT

NOT A SITE PHOTOGRAPH, ARTIST'S IMPRESSION



HEALTH & WELLNESS

24x7 MEDICAL HELPLINE

DOCTOR ON CALL / AMBULANCE



NOT A SITE PHOTOGRAPH. ARTIST'S IMPRESSION

24x7 PHARMACY AT COMMERCIAL PLAZA



NOT A SITE PHOTOGRAPH, ARTIST'S IMPRESSION

24x7 FITNESS & WELLNESS

WALK OF INFINITY / YOGA / MEDITATION



NOT A SITE PHOTOGRAPH. ARTIST'S IMPRESSION



SECURED LIVING



LIVE SECURED

YOUR SECURED ADDRESS
AT NOIDA

EMBRACE A LIFE THAT COMES WITH 5-TIER SECURITY NET



CITY LEVEL
SECURITY



NEIGHBORHOOD
SECURITY



PERIMETER
SECURITY



PROJECT LEVEL
SECURITY



UNIT LEVEL
SECURITY

24x7 SECURITY



NOT A SITE PHOTOGRAPH. ARTIST'S IMPRESSION

CITY LEVEL SECURITY*

PERSONAL BIKE ESCORT | ESCORT GUARD



*TO BE PRE-BOOKED FROM GODREJ NEST TO ANY POINT IN DELHI / NCR

NOT A SITE PHOTOGRAPH. ARTIST'S IMPRESSION

NEIGHBOURHOOD* SECURITY

SHUTTLE SERVICE ARMED WITH CCTV AND PERSONNEL



*GODREJ NEST TO SELECT DESTINATIONS DURING PRE-DEFINED TIME SLOTS

NOT ACTUAL SITE PHOTOGRAPHS. ARTIST'S IMPRESSION

PERIMETER SECURITY



DOG PATROLLING



UNDER VEHICLE SCANNER



FACE DETECTOR

PROJECT LEVEL SECURITY



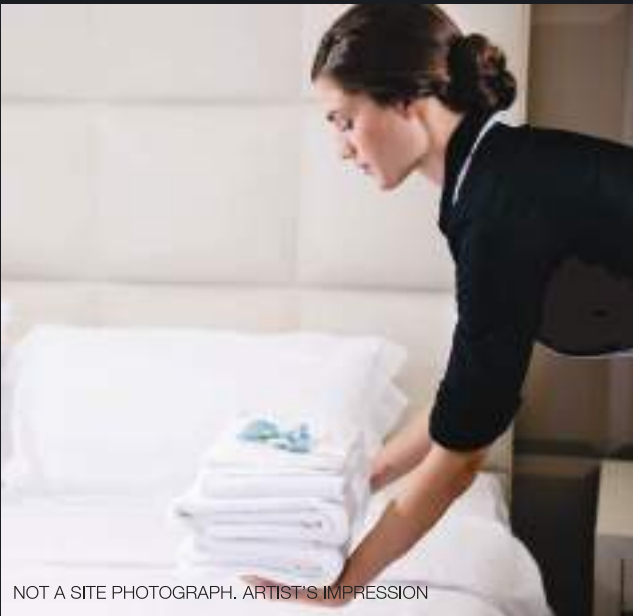
NOT A SITE PHOTOGRAPH. ARTIST'S IMPRESSION

VERIFIED SERVICE PROVIDERS
LIKE DOMESTIC HELP



NOT A SITE PHOTOGRAPH. ARTIST'S IMPRESSION

EMERGENCY SERVICES
ON CALL



NOT A SITE PHOTOGRAPH. ARTIST'S IMPRESSION

ROUND THE CLOCK
CCTV SURVEILLANCE



UNIT LEVEL SECURITY



NOT A SITE PHOTOGRAPH. ARTIST'S IMPRESSION

RIM LOCK
ON MAIN DOOR



NOT A SITE PHOTOGRAPH. ARTIST'S IMPRESSION

VIDEO DOOR PHONE



NOT A SITE PHOTOGRAPH. ARTIST'S IMPRESSION

BURGLAR ALARM SYSTEM
WITH SOS

EXCLUSIVE PRIVILEGES

GYM BY PRO SPORT*



*OR EQUIVALENT

NOT A SITE PHOTOGRAPH, ARTIST'S IMPRESSION

MUSIC & DANCE CLASSES BY DELHI DANCE ACADEMY*



*OR EQUIVALENT

NOT A SITE PHOTOGRAPH, ARTIST'S IMPRESSION

CONCIERGE SERVICES BY CLUB CONCIERGE*



*OR EQUIVALENT

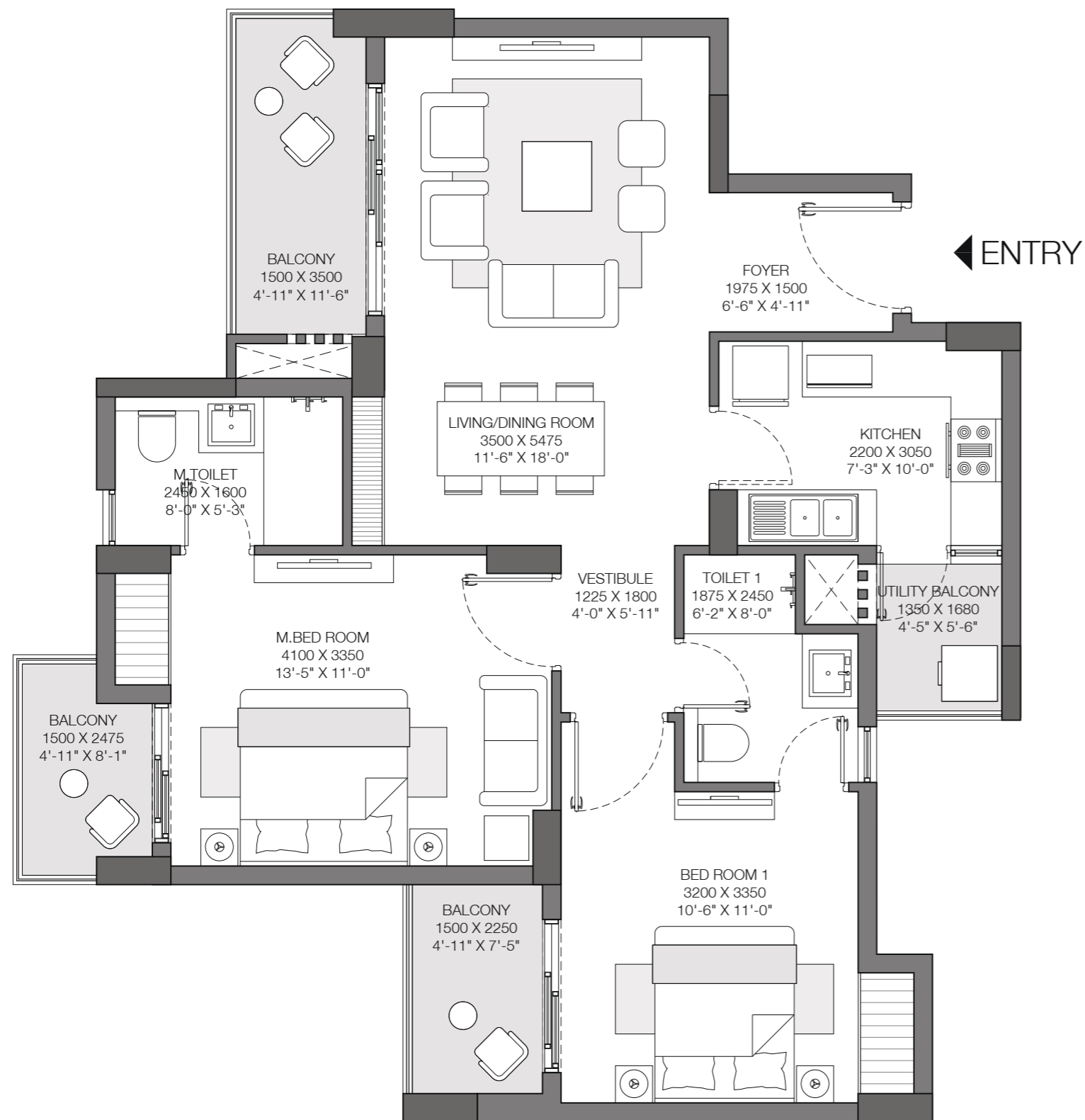
NOT A SITE PHOTOGRAPH, ARTIST'S IMPRESSION

UNIT CONFIGURATION

Unit Type	Carpet Area (Sq.mt)	Exclusive Area (Sq.mt)	Total Area (Sq.mt)
SOLITAIRE			
3 BHK + S. WC	104.90	22.00	127.00
3BHK+2 Store/Utility	113.60	23.54	138.00
ICONIC			
Iconic Tower - 3 BHK + 2 Store/Utility	126.40	26.50	152.00
Iconic Tower - 4 BHK + Utility/Store	150.36	28.70	179.00
Iconic Tower - 4BHK+Utility/Store + Family Lounge/Study	169.20	32.00	201.00

GODREJ NEST

SECTOR 150, NOIDA



Tower A1: Unit 1 & 4

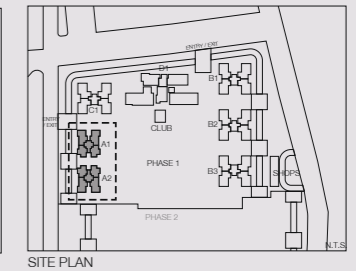
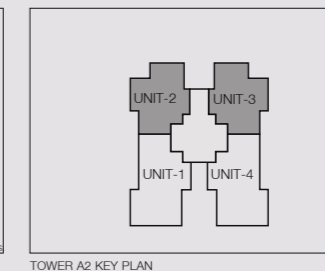
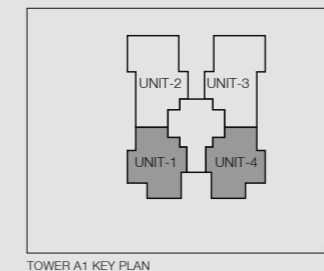
Towe A2: Unit 2 & 3

2 BHK

Unit Carpet Area: 69 SQ.M.

Exclusive Area: 14 SQ.M.

Total Area: 83 SQ.M.

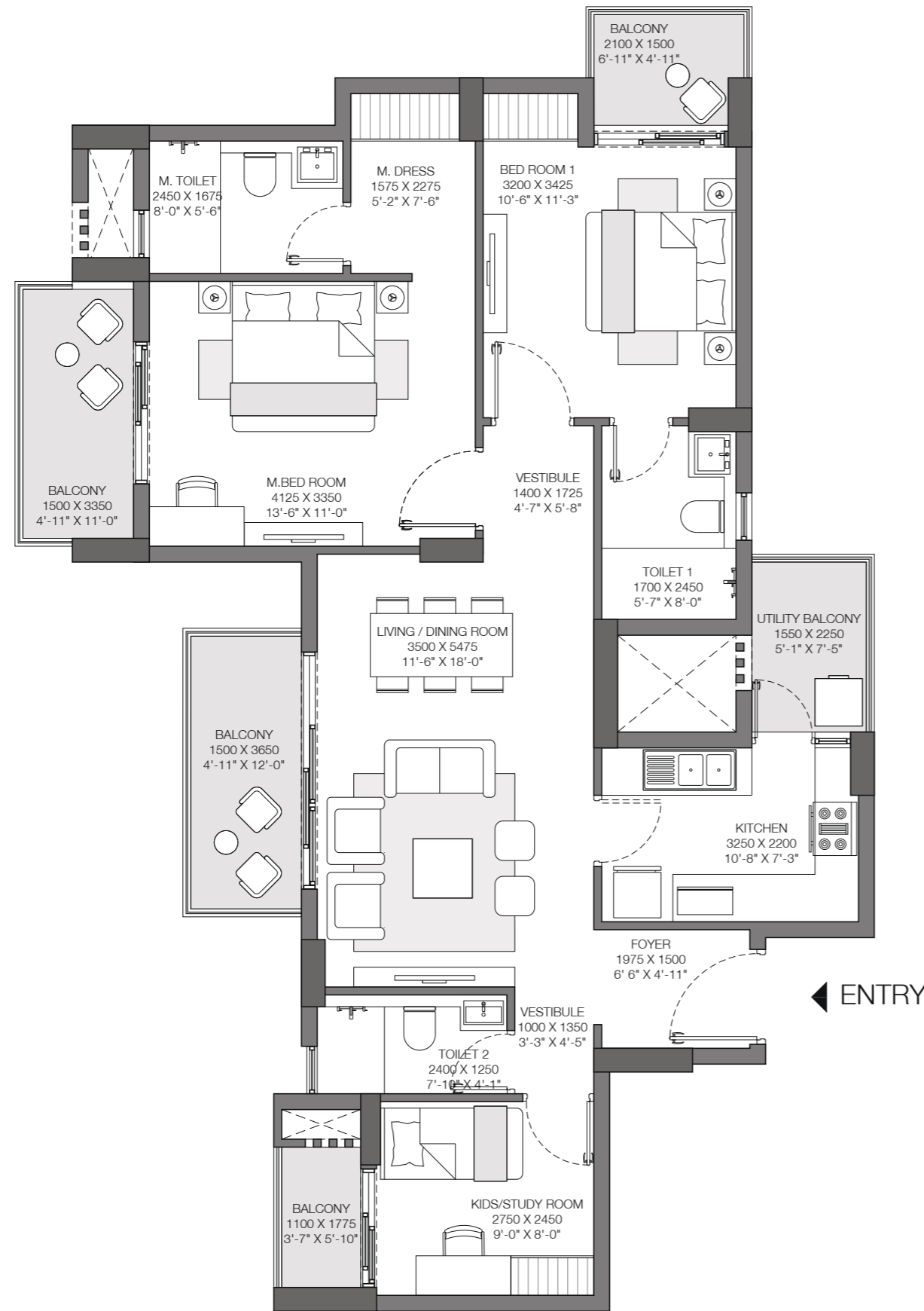


This is not an offer, an invitation to offer and/or commitment of any nature. This contains artistic impressions and no warranty is expressly or impliedly given that the completed development will comply in any degree with such artist's impression as depicted. The furniture, accessories, paintings, items, electronic goods, additional fittings/fixtures, decorative items, false ceiling including finishing materials, specifications, shades, sizes and colour of the tiles, etc. shown in the image are only indicative in nature and are only for the purpose of illustrating/indicating a conceived layout and do not form part of the standard specifications/amenities/services to be provided in the unit. All specifications of the unit shall be as per the final agreement between the Parties.

The present project is being developed by Brick Rise Developers Pvt. Ltd. (A subsidiary of Lotus Greens Constructions Pvt. Ltd.) who has appointed Godrej Properties Limited as the Development Manager for the same. IndusInd Bank Ltd. has sanctioned the construction finance for the present Project. The RERA registration number for this project is: GODREJ NEST Phase 1 UPRERAPRJ13521 on website- <http://up-rera.in>

GODREJ NEST

SECTOR 150, NOIDA



Tower A1: Unit 2 & 3

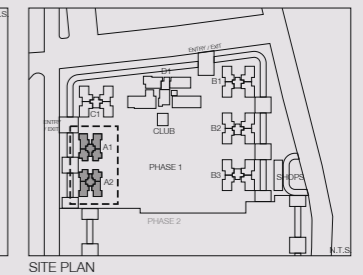
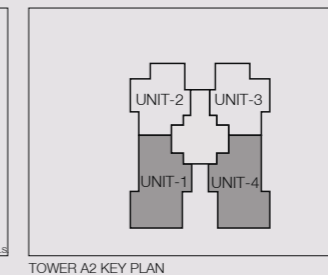
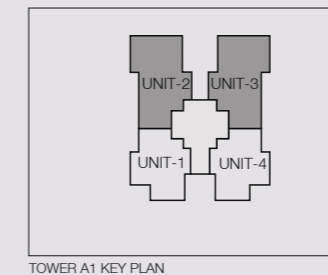
Towe A2: Unit 1 & 4

3 RHK

Unit Carpet Area: 83 SQ.M.

Exclusive Area: 19 SQ.M.

Total Area: 102 SQ.M.

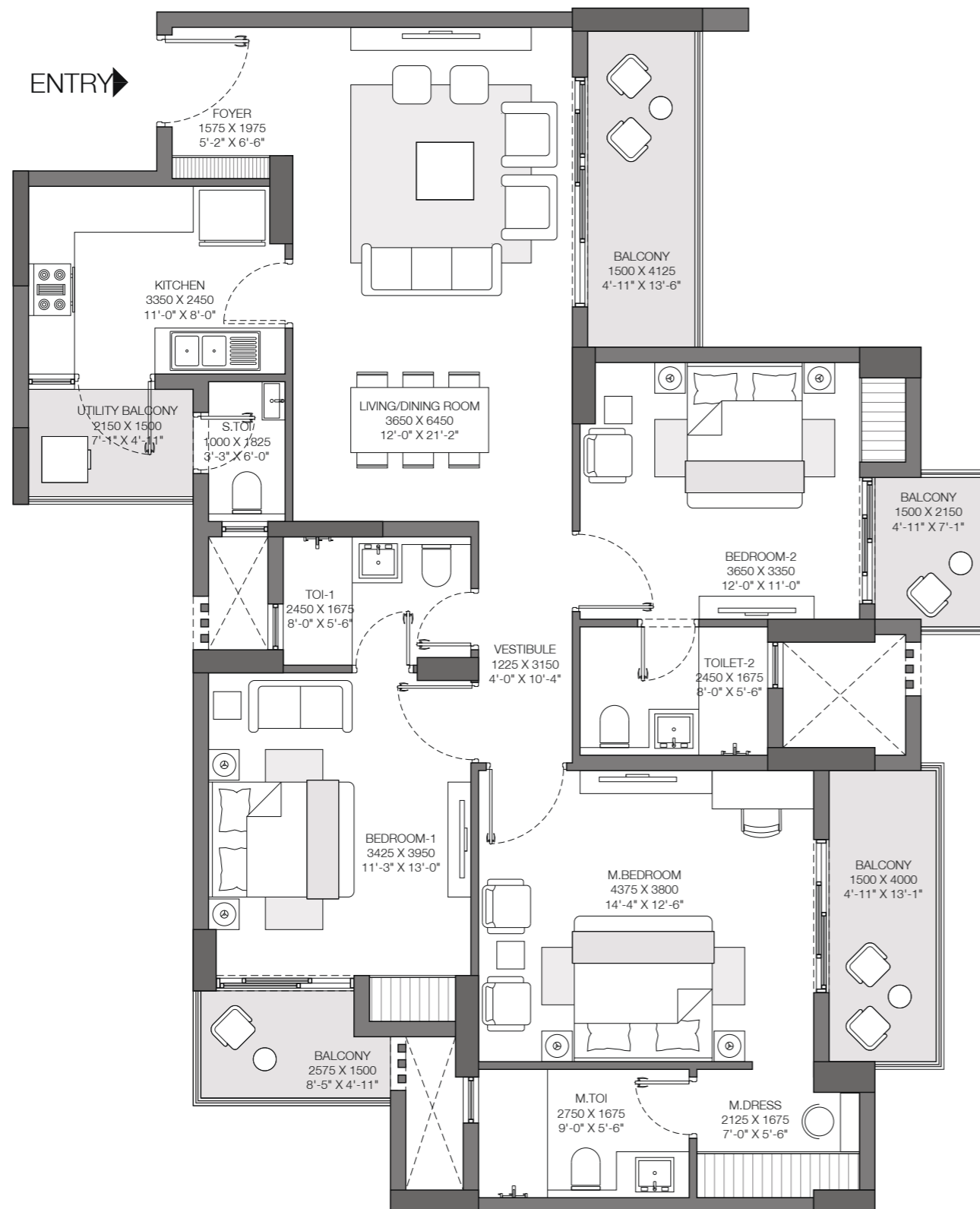


This is not an offer, an invitation to offer and/or commitment of any nature. This contains artistic impressions and no warranty is expressly or impliedly given that the completed development will comply in any degree with such artist's impression as depicted. The furniture, accessories, paintings, items, electronic goods, additional fittings/fixtures, decorative items, false ceiling including finishing materials, specifications, shades, sizes and colour of the tiles, etc. shown in the image are only indicative in nature and are only for the purpose of illustrating/indicating a conceived layout and do not form part of the standard specifications/amenities/services to be provided in the unit. All specifications of the unit shall be as per the final agreement between the Parties.

The present project is being developed by Brick Rise Developers Pvt. Ltd. (A subsidiary of Lotus Greens Constructions Pvt. Ltd.) who has appointed Godrej Properties Limited as the Development Manager for the same. IndusInd Bank Ltd. has sanctioned the construction finance for the present Project. The RERA registration number for this project is: GODREJ NEST Phase 1 UPRERAPRJ13521 on website- <http://up-rera.in>

GODREJ NEST

SECTOR 150, NOIDA



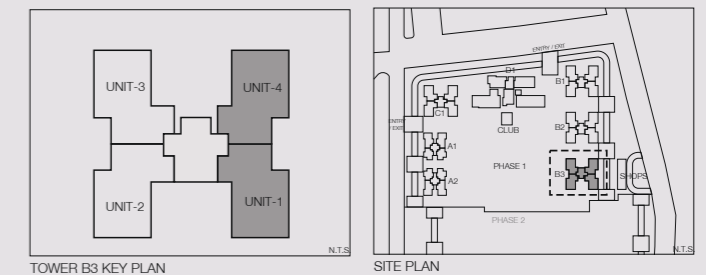
Tower B3: Unit 1 & 4

3 BHK + S. WC

Unit Carpet Area: 105 SQ.M.

Exclusive Area: 22 SQ.M.

Total Area: 127 SQ.M.

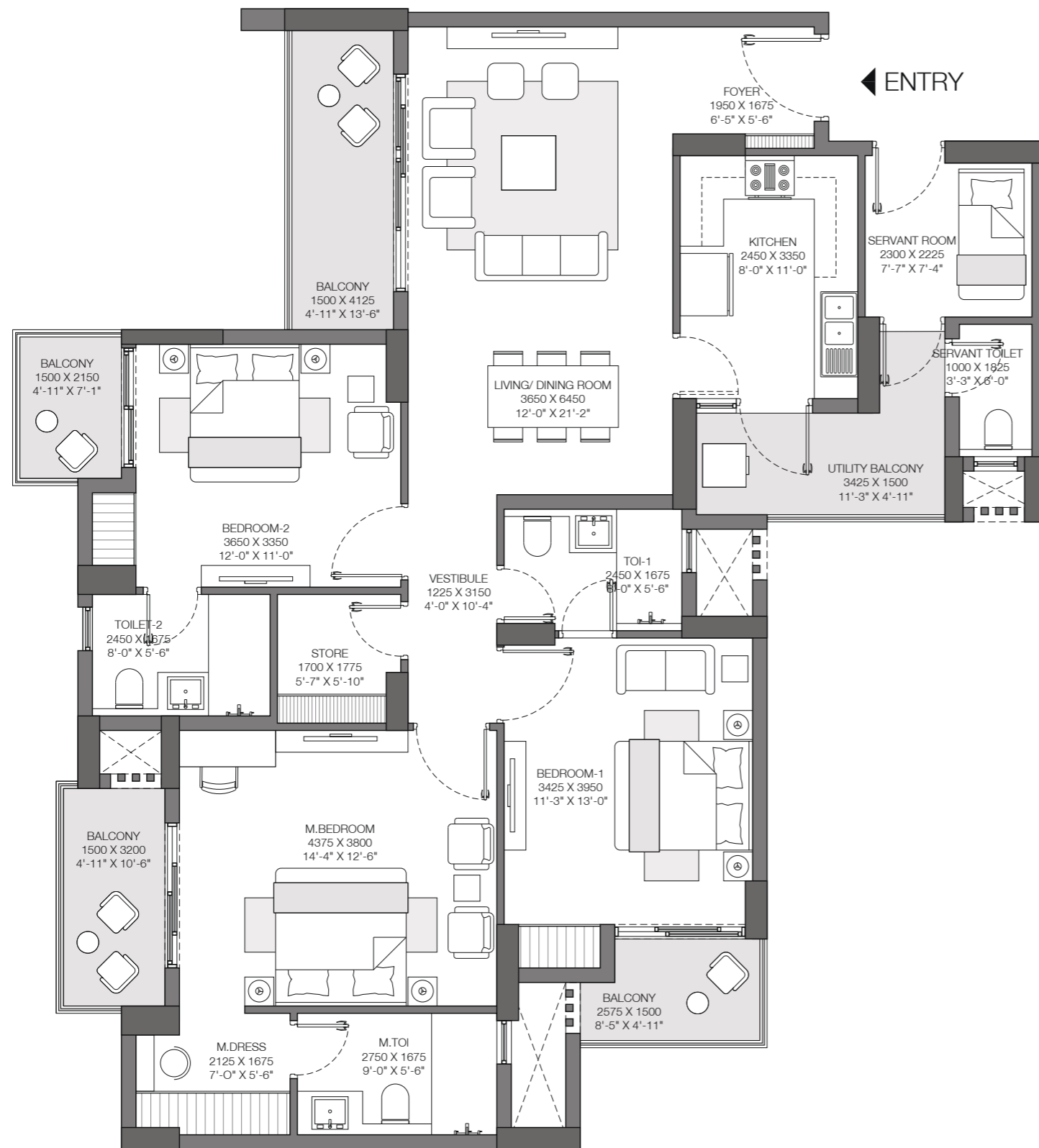


This is not an offer, an invitation to offer and/or commitment of any nature. This contains artistic impressions and no warranty is expressly or impliedly given that the completed development will comply in any degree with such artist's impression as depicted. The furniture, accessories, paintings, items, electronic goods, additional fittings/fixtures, decorative items, false ceiling including finishing materials, specifications, shades, sizes and colour of the tiles, etc. shown in the image are only indicative in nature and are only for the purpose of illustrating/indicating a conceived layout and do not form part of the standard specifications/amenities/services to be provided in the unit. All specifications of the unit shall be as per the final agreement between the Parties.

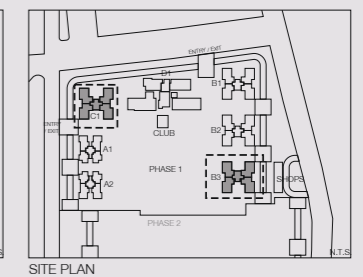
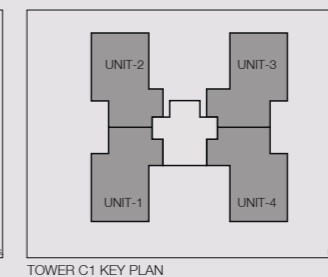
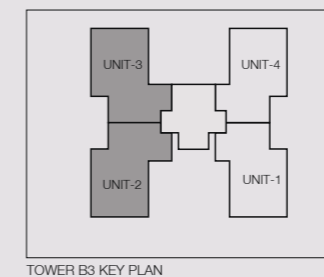
The present project is being developed by Brick Rise Developers Pvt. Ltd. (A subsidiary of Lotus Greens Constructions Pvt. Ltd.) who has appointed Godrej Properties Limited as the Development Manager for the same. IndusInd Bank Ltd. has sanctioned the construction finance for the present Project. The RERA registration number for this project is: GODREJ NEST Phase 1 UPRERAPRJ13521 on website- <http://up-rera.in>

GODREJ NEST

SECTOR 150, NOIDA



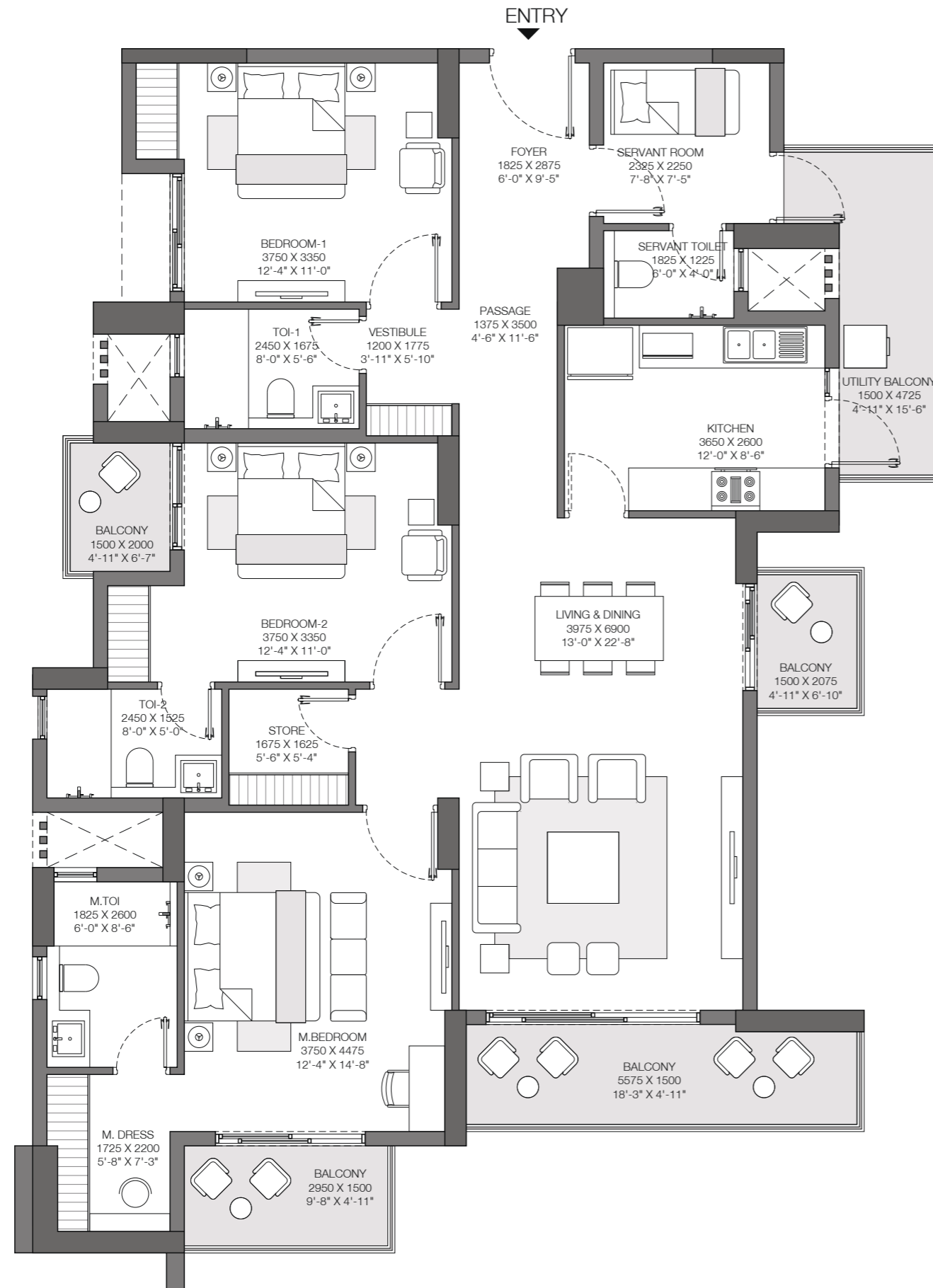
Tower B3: Unit 2 & 3
 Tower C1: Unit 1, 2, 3 & 4
 3 BHK + 2 STORE / UTILITY
 Unit Carpet Area: 114 SQ.M.
 Exclusive Area: 24 SQ.M.
 Total Area: 138 SQ.M.



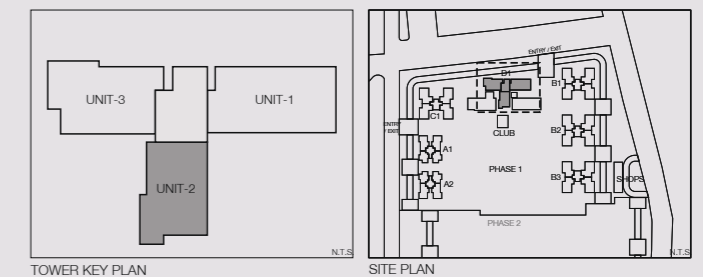
This is not an offer, an invitation to offer and/or commitment of any nature. This contains artistic impressions and no warranty is expressly or impliedly given that the completed development will comply in any degree with such artist's impression as depicted. The furniture, accessories, paintings, items, electronic goods, additional fittings/fixtures, decorative items, false ceiling including finishing materials, specifications, shades, sizes and colour of the tiles, etc. shown in the image are only indicative in nature and are only for the purpose of illustrating/indicating a conceived layout and do not form part of the standard specifications/amenities/services to be provided in the unit. All specifications of the unit shall be as per the final agreement between the Parties. The present project is being developed by Brick Rise Developers Pvt. Ltd. (A subsidiary of Lotus Greens Constructions Pvt. Ltd.) who has appointed Godrej Properties Limited as the Development Manager for the same. IndusInd Bank Ltd. has sanctioned the construction finance for the present Project. The RERA registration number for this project is: GODREJ NEST Phase 1 UPRERAPRJ13521on website- <http://up-rera.in>

GODREJ NEST

SECTOR 150, NOIDA



Tower D1: Unit 2
 ICONIC TOWER- 3 BHK+2 STORE/UTILITY
 Unit Carpet Area: 126 SQ.M.
 Exclusive Area: 26 SQ.M.
 Total Area: 152 SQ.M.

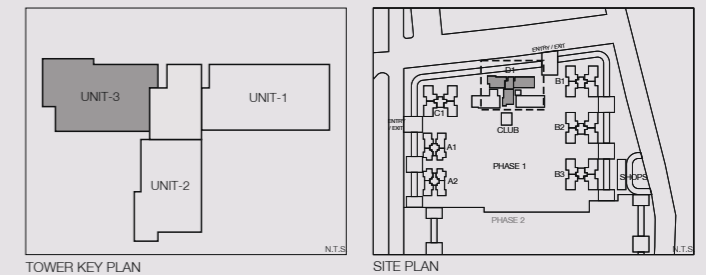
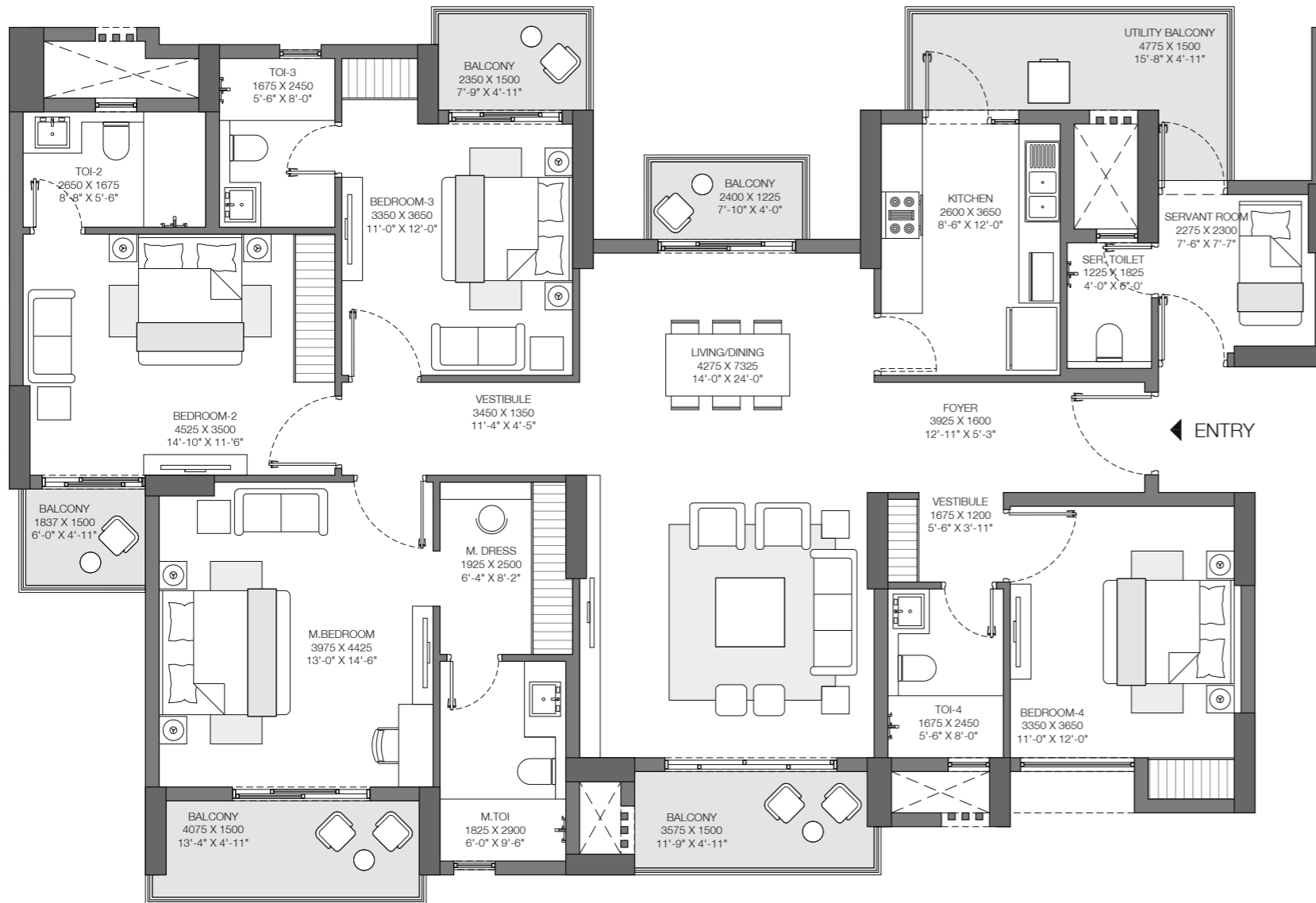


This is not an offer, an invitation to offer and/or commitment of any nature. This contains artistic impressions and no warranty is expressly or impliedly given that the completed development will comply in any degree with such artist's impression as depicted. The furniture, accessories, paintings, items, electronic goods, additional fittings/fixtures, decorative items, false ceiling including finishing materials, specifications, shades, sizes and colour of the tiles, etc. shown in the image are only indicative in nature and are only for the purpose of illustrating/indicating a conceived layout and do not form part of the standard specifications/amenities/services to be provided in the unit. All specifications of the unit shall be as per the final agreement between the Parties. The present project is being developed by Brick Rise Developers Pvt. Ltd. (A subsidiary of Lotus Greens Constructions Pvt. Ltd.) who has appointed Godrej Properties Limited as the Development Manager for the same. IndusInd Bank Ltd. has sanctioned the construction finance for the present Project. The RERA registration number for this project is: GODREJ NEST Phase 1 UPRERAPRJ13521 on website- <http://up-rera.in>

GODREJ NEST

SECTOR 150, NOIDA

Tower D1: Unit 3
 ICONIC TOWER- 4 BHK+UTILITY/STORE
 Unit Carpet Area: 150 SQ.M.
 Exclusive Area: 29 SQ.M.
 Total Area: 179 SQ.M.

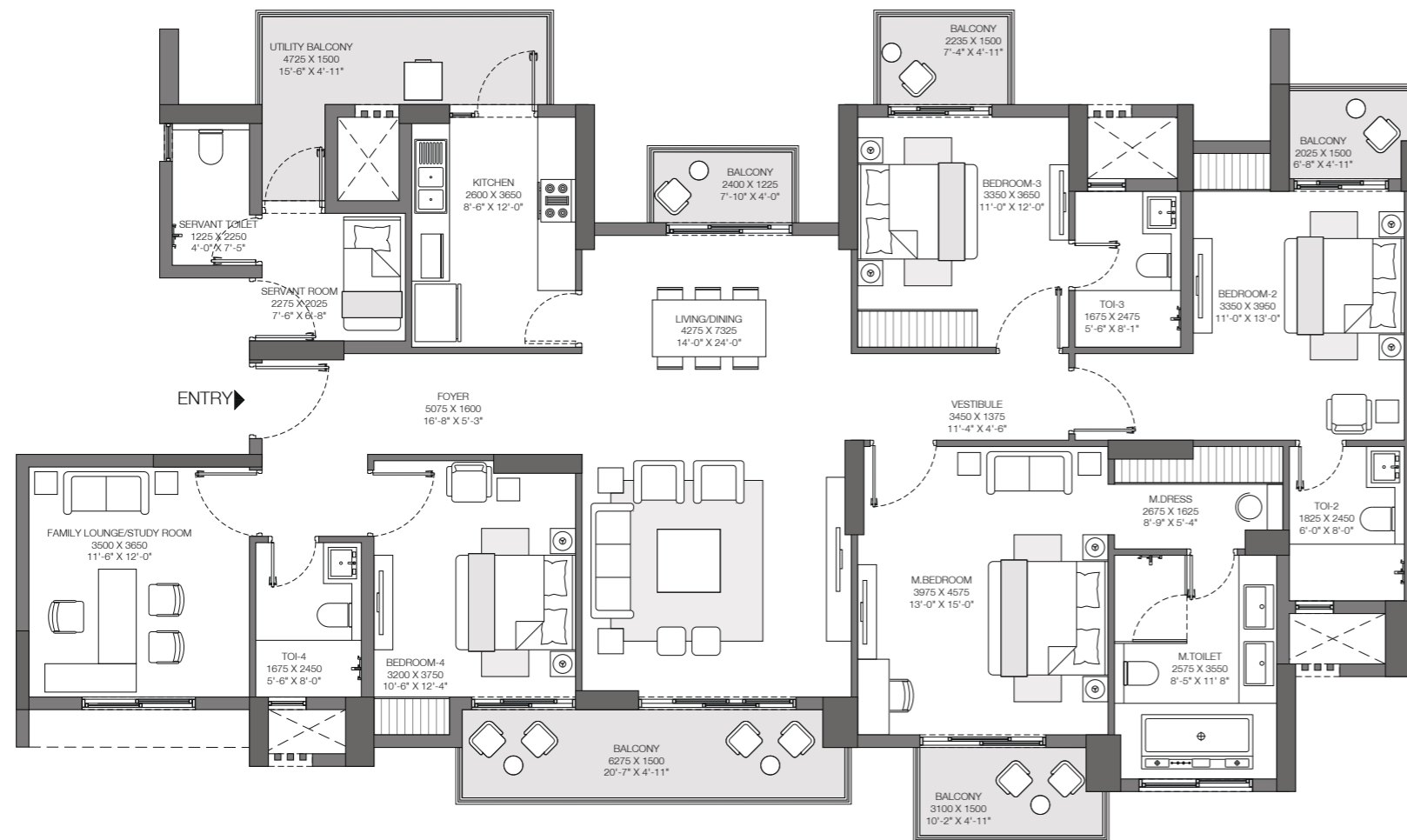


This is not an offer, an invitation to offer and/or commitment of any nature. This contains artistic impressions and no warranty is expressly or impliedly given that the completed development will comply in any degree with such artist's impression as depicted. The furniture, accessories, paintings, items, electronic goods, additional fittings/fixtures, decorative items, false ceiling including finishing materials, specifications, shades, sizes and colour of the tiles, etc. shown in the image are only indicative in nature and are only for the purpose of illustrating/indicating a conceived layout and do not form part of the standard specifications/amenities/services to be provided in the unit. All specifications of the unit shall be as per the final agreement between the Parties.

The present project is being developed by Brick Rise Developers Pvt. Ltd. (A subsidiary of Lotus Greens Constructions Pvt. Ltd.) who has appointed Godrej Properties Limited as the Development Manager for the same. IndusInd Bank Ltd. has sanctioned the construction finance for the present Project. The RERA registration number for this project is: GODREJ NEST Phase 1 UPRERAPRJ13521 on website- <http://up-rera.in>

GODREJ NEST

SECTOR 150, NOIDA



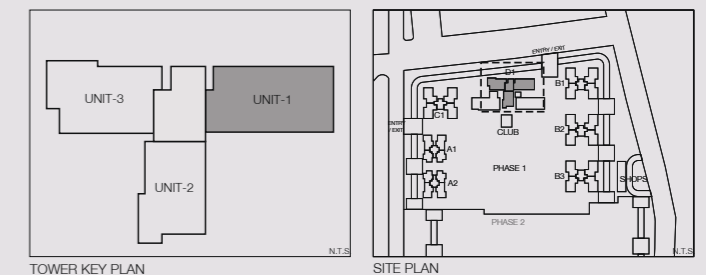
Tower D1: Unit 1

ICONIC TOWER - 4BHK+UTILITY/STORE +
FAMILY LOUNGE/STUDY

Unit Carpet Area: 169 SQ.M.

Exclusive Area: 32 SQ.M.

Total Area: 201 SQ.M.



This is not an offer, an invitation to offer and/or commitment of any nature. This contains artistic impressions and no warranty is expressly or impliedly given that the completed development will comply in any degree with such artist's impression as depicted. The furniture, accessories, paintings, items, electronic goods, additional fittings/fixtures, decorative items, false ceiling including finishing materials, specifications, shades, sizes and colour of the tiles, etc. shown in the image are only indicative in nature and are only for the purpose of illustrating/indicating a conceived layout and do not form part of the standard specifications/amenities/services to be provided in the unit. All specifications of the unit shall be as per the final agreement between the Parties.

The present project is being developed by Brick Rise Developers Pvt. Ltd. (A subsidiary of Lotus Greens Constructions Pvt. Ltd.) who has appointed Godrej Properties Limited as the Development Manager for the same. IndusInd Bank Ltd. has sanctioned the construction finance for the present Project. The RERA registration number for this project is: GODREJ NEST Phase 1 UPRERAPRJ13521 on website- <http://up-rera.in>

OUR JOINT VENTURE PARTNER
LOTUS GREENS



Site Address: Godrej Nest, Plot No. SC-02/ H & I, Sec 150, Noida

RERA Registration: In two phases i.e. Godrej Nest Phase -1 UPRERAPRJ13521 and Godrej Nest Phase-2 UPRERAPRJ14252; website- <http://up-rera.in>. "Solitaire" comprises of two towers registered under Godrej Nest Phase-2 UPRERAPRJ14252 i.e. Tower B1 and B2. Tower D1 is being marketed as Iconic Tower. Building Plan has been sanctioned on 30.09.2016 bearing No. IV-1490/929.

This is not an offer, an invitation to offer and/or commitment of any nature. Recipients are advised to apprise themselves of the necessary and relevant information of the project prior to making any purchase decisions. All specifications of the unit shall be as per the final agreement between the Parties. That the inclusions reflected in the image are not part of the offer and are only illustrative in nature. The present project is being developed by Brick Rise Developers Pvt. Ltd. (A subsidiary of Lotus Greens Constructions Pvt. Ltd.) who has appointed Godrej Properties Limited as the Development Manager for the same. Brick Rise Developers Pvt. Ltd. availed construction finance for the present Project from IndusInd Bank Ltd and has mortgaged 36000 sq mtrs out of total land other than land comprised under Godrej Nest.

"24x7" only applicable on those amenities/conveniences which are permissible under the applicable laws to function for 24/7 and are subject to approval/s from concerned government authorities. The operators, agents, service providers are subject to change. In the event such proposed amenities are non- functional for 24 hours, then we do not assume any liability or responsibility for the same and customers shall have no claims against us nor demand any indemnity whatsoever.